

3.1 HRS

EQUIP. TYPE *R390/JWR* EXP. NO.

COL 340 0642 00

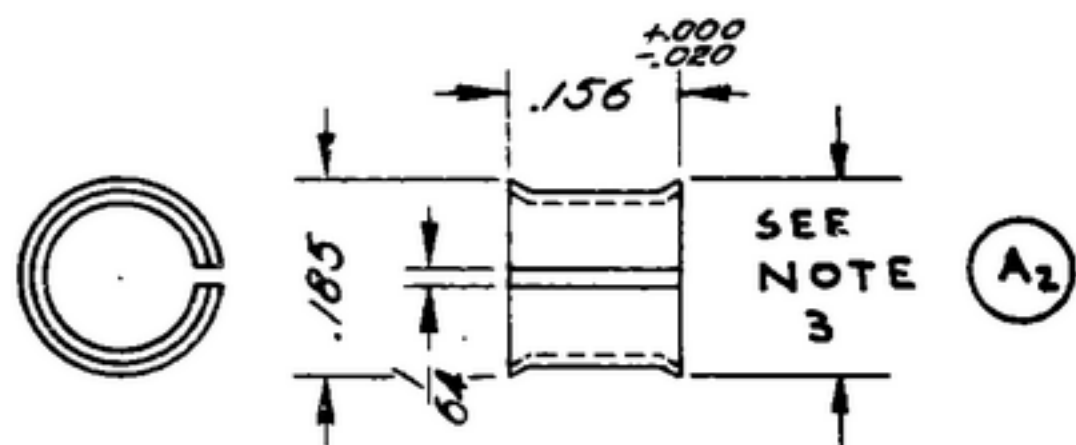
NOTICE: WHEN GOVERNMENT DRAWINGS, SPECIFICATIONS, OR OTHER DATA ARE USED FOR ANY PURPOSE OTHER THAN IN CONNECTION WITH A DEFINITELY RELATED GOVERNMENT PROCUREMENT OPERATION, THE UNITED STATES GOVERNMENT THEREBY INCURS NO RESPONSIBILITY FOR ANY OMISSION WHATSOEVER, AND THE FACT THAT THE GOVERNMENT MAY HAVE FORMULATED, PUBLISHED, OR IN ANY WAY SUPPLIED THE SAID DRAWINGS, SPECIFICATIONS, OR OTHER DATA IS NOT TO BE REGARDED BY IMPLICATION OR OTHERWISE AS IN ANY MANNER LICENSING THE HOLDER OR ANY OTHER PERSON OR CORPORATION, OR CONVEYING ANY RIGHTS OR PERMISSION TO MANUFACTURE, USE, OR SELL ANY PATENTED INVENTION THAT MAY IN ANY WAY BE RELATED THERETO.

THIS DOCUMENT HAS BEEN PURCHASED BY THE GOVERNMENT AND MAY BE REPRODUCED AND USED IN CONNECTION WITH ANY GOVERNMENT PROCUREMENT OR MAINTENANCE OPERATION.

* FOR INFORMATION ONLY. CONTRACTOR MAY AT HIS OPTION DEVIATE FROM THESE PROCESS DETAILS.

~~* SWE APPROVAL~~
~~SYM PR10042 7~~

REVISIONS			
SYM	DESCRIPTION	DATE	APPROVAL
A ₂	A ₁ - ADDED APPL. SM-D-343620 A ₂ - ADDED NOTATION	19 OCT 59	42428-PC 59-A1-51 REV'D PME



BERYLLIUM COPPER, COND A, PER SPEC QQ-C-533, .012 THICK.

NOTES:

- 1. HEAT TREAT 56-60 ROCKWELL 30N SCALE.*
- 2. SLEEVE TAPE SPRING FOR RETAINING #8 CAPTIVE SCREWS.*
- 3. .185 DIMENSION SHALL BE MEASURED WITH PART PRESSED OVER A .147 DIA MANDREL.*
- 4. .156 DIMENSION TO BE MEASURED WITH PART IN FREE STATE.*

(A₁)

COLLINS PART NO.	ITEM	QTY	PART NO.	DESCRIPTION	DATE	DATE SPEC
LIST OF MATERIAL						
COLLINS PART NO. <i>559 0275 002</i>						

SM-D-343620		SC-DL-248775	DRAWN RCHILL	CHECKED <i>[Signature]</i>	APPROVED	COLLINS RADIO CO. OSCAR RAPID, IOWA 14214-PH-51-93	DEPARTMENT OF THE ARMY SIGNAL CORPS ENGINEERING LABORATORIES FORT MONMOUTH NEW JERSEY
558 0453 004 2	SM-D-248854					SIGNAL CORPS	
558 0396 004 2	SM-D-249007					REVIEWED PME	SM-B-283175
558 0363 004 3	SM-D-248818					APPROVED HLY	
558 0340 004 4	SM-D-248801					PME	
558 0333 004 6	SM-D-248564	SC-DL-248775				DATE <i>23 NOV 55</i>	SCALE <i>4/1</i>
COLLINS NO.	QTY	NEXT ASSY	USED ON	APPLICATION			

UNLESS OTHERWISE SPECIFIED:
 DECIMAL DIMENSIONS INCLUDING HOLE SIZES MAY VARY ±.008
 FRACTIONAL DIMENSIONS INCLUDING HOLE SIZES MAY VARY ±1/64
 MACHINED ANGLES MAY VARY ±1°
 SHEARED ANGLES MAY VARY ±.25°
 BROKEN ANGLES MAY VARY ±1°
 ECCENTRICITY BETWEEN ANY DIAMETERS ON THE SAME CENTERLINE SHALL NOT EXCEED .010 TOTAL INDICATOR READING.
 ALL DIMENSIONS ARE FINISH DIMENSIONS INCLUDING APPLIED FINISH AND ARE GIVEN IN INCHES.